

# **City of Cape May** **Municipal Public Access Plan**

**Submitted by:** City of Cape May

**Date of Current Submittal:** 12/27/2024

**Approved by the New Jersey Department of Environmental Protection:**

**Date of NJDEP approval**

**Adoption by the City:**

**Date will be added upon adoption**

**Prepared By:**

**Craig R. Hurless, PE, PP, CME**

**Hurless Planning & Engineering, LLC**

**507 Heritage Court, Galloway, NJ 08205**

**[c.hurless@comcast.net](mailto:c.hurless@comcast.net)**

**609.204.0798**

## **Index**

Introduction	3
I. Municipal Public Access Vision	4
II. Existing Public Access	6
III. Community Needs Assessment	15
IV. Implementation Plan	16
V. Resolution of Incorporation	28
Appendix 1 Resolution for Incorporating MPAP into Master Plan	29
Appendix 2 Tables	30
Appendix 3 Recreation and Open Space Inventory	32

## Introduction

This document is intended to provide a comprehensive public access plan for the City of Cape May which lays out a vision for providing access to tidal waters and shorelines within the municipal boundary. This Municipal Public Access Plan (MPAP) was developed in accordance with the Coastal Zone Management Rules. The development and implementation of this MPAP supports the policy of local determination of public access locations and facilities, while safeguarding regulatory flexibility.

The Public Trust Doctrine, first set by the Roman Emperor Justinian around A.D. 500 as part of Roman civil law, establishes the public's right to full use of the seashore. The Public Trust Doctrine states that natural resources, including, but not limited to, tidal waterways and their shores, air and wildlife in the State of New Jersey are held by the State in trust for the benefit of all of the people. Further, the Public Trust Doctrine establishes the right of the public to fully utilize these natural resources for a variety of public uses.

The original purpose of the doctrine was to assure public access to waters for navigation, commerce and fishing. In the past two centuries, State and Federal courts in New Jersey have recognized that public uses guaranteed by the Public Trust Doctrine also include public recreational uses such as swimming, sunbathing, fishing, surfing, sport diving, bird watching, walking and boating along the various tidal shores.

Through various judicial decisions, the right of use upheld by the Public Trust Doctrine has been incorporated into many state constitutions and statutes, allowing the public the right to all lands, water and resources held in the public trust by the state, including those in New Jersey. The New Jersey Department of Environmental Protection (DEP) encourages municipalities to develop and adopt MPAPs to govern public access within their municipality. This MPAP consists of an inventory of public access locations and plans to preserve and enhance access based on community needs and State standards.

This plan has been developed in collaboration with the DEP, Cape May Planning Board, Cape May Environmental Commission and Planning Board Professionals and presented to the Planning Board on 2/10/2011 and 1/28/2025 and approved for submission to the DEP on **date**. Upon receiving approval from the DEP on **date**, the MPAP was incorporated into the Conservation Element of the Master Plan by resolution on **date**, (see Appendix 1). All public access decisions made within the City of Cape May after this date will be consistent with this plan.

## Importance of Municipal Public Access Plans

The premise of the authorization of MPAPs is that public access to tidal waters is fundamentally linked to local conditions. The development of a MPAP enables the municipality to better plan, implement, maintain, and improve the provision of public access for its residents and visitors. It also informs and/or identifies public access requirements associated with any proposed development or redevelopment project.

The City of Cape May is responsible for ensuring that public access to the tidal waters within the municipality is in accordance with this plan as approved by DEP and adopted as part of the municipal Master Plan. For each new project that is required to provide public access through a DEP issued Coastal Area Review Act or Waterfront Development permit, the City of Cape May will provide DEP with a letter confirming its consistency with this MPAP. Upon adoption of this MPAP into the municipal Master Plan, the DEP public access requirement shall be satisfied in accordance with this plan.

## **I. Municipal Public Access Vision**

### **A. Overview of Municipality**

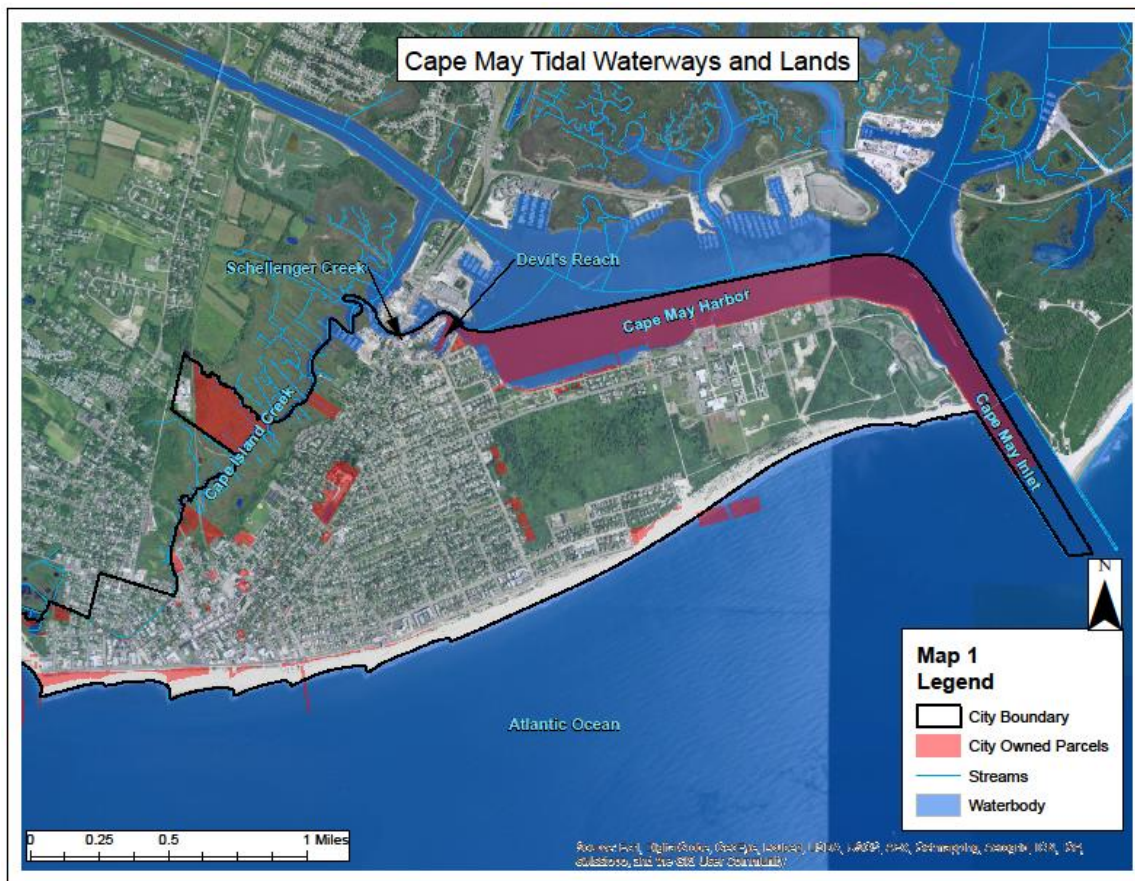
The City of Cape May is a community located at the southern end of New Jersey and Cape May County. Cape May is located at the southern tip of Cape May Peninsula in Cape May County, New Jersey, where the Delaware Bay meets the Atlantic Ocean. Cape May's southern shoreline is formed by wide, white sand beaches that border the Atlantic Ocean and the City is influenced by sensitive environmental features. Wetlands occur throughout all sections of the city and limit development on vacant lands, particularly near Cape May Harbor in the east end and along the tidally flowed Cape Island Creek. Protection of fragile dunes is essential to protection of the valuable beach resources.

According to the [United States Census Bureau](#), the city has a total area of 2.8 square miles, of which 2.5 square miles is land and 0.3 square miles is water. Cape May is generally low-lying; its highest point, at the intersection of Washington and Jackson Streets, is a mere 14 feet above sea level. As of the 2020 United States Census, the city had a year-round population of 2,768. In the summer, Cape May's population swells to as many as 50,000 with visitors.

With a rich history, award-winning beaches, designation as a top birding location, and many historic Victorian structures, Cape May is a seaside resort drawing visitors from around the world. Cape May considers itself to be America's first resort community and vacation destination.

#### **1. Map 1. City of Cape May Tidal Waterways and Lands**

Map 1 shows all the tidal waterways within the municipality and all lands held by the municipality.



Map 1: City of Cape May Tidal Waterways and Lands

## B. Municipal Public Access Goals and Objectives

The following public access related goals and objectives are included in the City's Master Plan:

### 1. Goals & Objectives

- i. Goal: Ensure the provision of an adequate range and availability of community services and recreation to accommodate existing and future City residents and visitors. (March 12, 2019 Master Plan Reexamination - Community Facilities & Recreation Element p. 114)
- ii. Objective: Continue to evaluate the needs for community facilities and recreation and plan and develop projects that adequately provide services and facilities (March 12, 2019 Master Plan Reexamination - Community Facilities & Recreation Element p. 114)
- iii. Objective: Improve access and maintenance of beach areas and continue to construct accessible access compliant with ADA requirements. Promotion and education of beach safety remains a priority (March 12, 2019 Master Plan Reexamination - Community Facilities & Recreation Element p. 114).
- iv. Goal: To protect the quality of the City of Cape May's natural and manmade environment in order to preserve the balance of its ecological systems and safeguard the future health

and welfare of residents and visitors (March 12, 2019 Master Plan Reexamination – Conservation Element p. 154).

- v. Objective: Provide controlled access to wetland areas to promote environmental protection and public education (March 12, 2019 Master Plan Reexamination – Conservation Element p. 155).

In addition to those goals outlined within the Master Plan, The City of Cape May affirms the following State required goals specifically for public access:

- vi. All existing public access shall be maintained to the maximum extent practicable.
- vii. Maintain safe and adequate access locations for fishing in those areas where fishing is safe and appropriate.
- viii. Provide clear informative signage for access locations.

The City of Cape May’s Municipal Public Access Plan embraces and reflects these goals and will help preserve, protect, and enhance the public’s ability to access the Public Trust lands which surround the municipality. The previous goals are compliant with the New Jersey Coastal Zone Management Rules broad set of coastal protection goals (see N.J.A.C 7:7-1.1 (c)).

## **2. Municipal Master Plan Consistency**

The goals and objectives provided in this Municipal Public Access Plan have been reviewed and are consistent with The City of Cape May’s Master Plan.

All existing public access points will be maintained to the maximum extent practicable. This is consistent with Cape May’s goal to address and provide adequate community facilities and recreation. This is also consistent with the goal to maintain safe and adequate access for fishing in those areas where fishing is safe and appropriate. The City has designated fishing and surfing areas that do not conflict with designated bathing areas. The City also promotes and provides clear informative signage at access locations which is consistent with the objective to provide controlled access to wetland areas to promote environmental protection and public education.

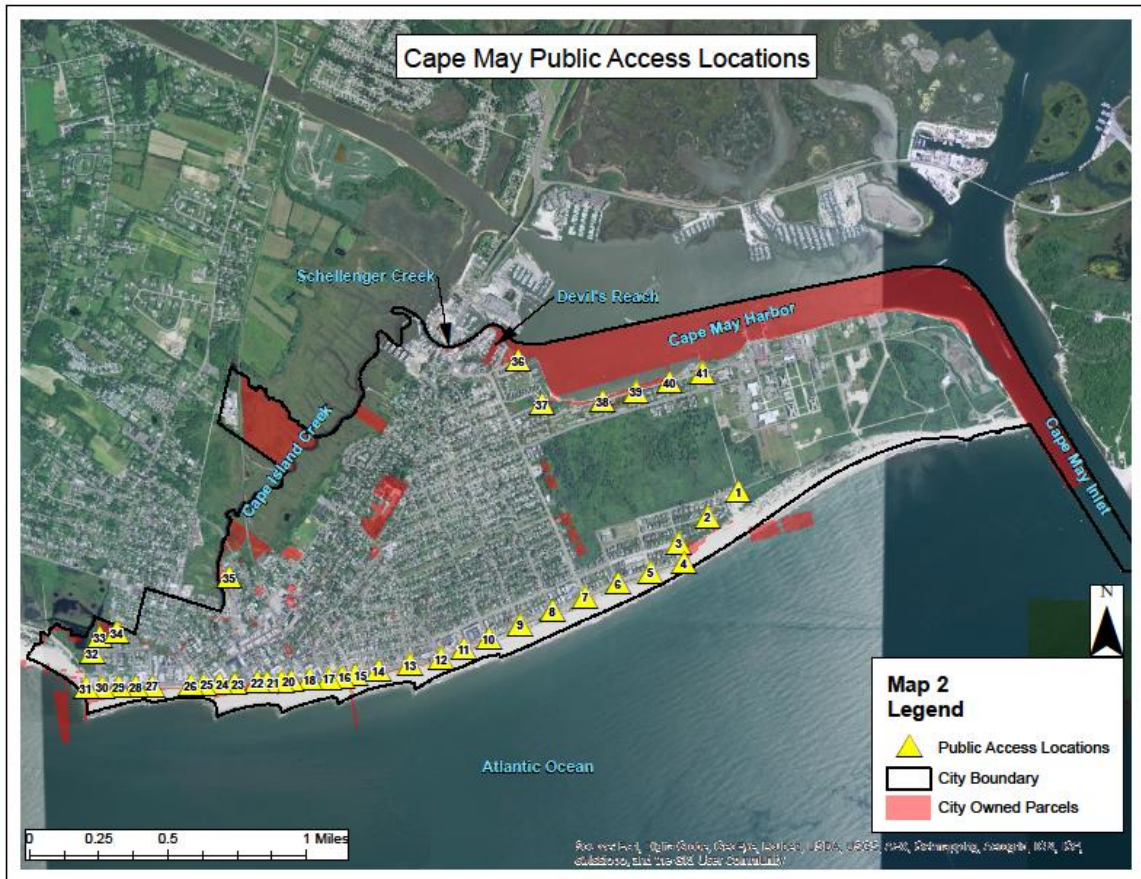
## **II. Public Access**

Public Access in the City of Cape May is provided by the municipality and consists of a variety of access points and facilities discussed below. The City has constructed and maintained numerous access improvements including beach walkways, stairs and ramps, ADA facilities, bathroom and shower facilities, lifeguarded beaches and boardwalks, pavilions, promenades, public parks and other viewing vantage facilities.

### **A. Public Access Locations**

**Map 2 City of Cape May Public Access Locations**, identifies an inventory of all public access locations within Cape May, whether they are currently Utilized, Un-utilized, or Restricted to

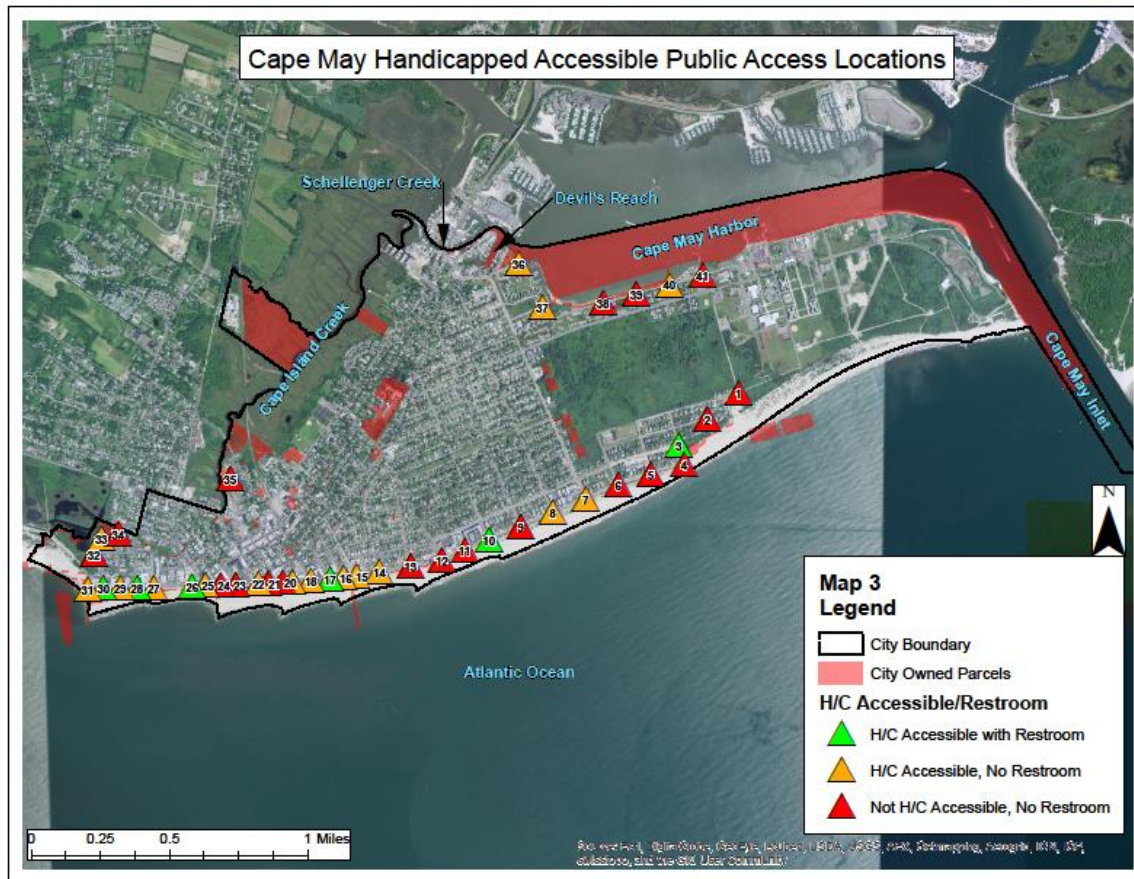
the public, along with their attributes of improvements and activities. See Table 1, located in the Appendix, for detailed information for each location.



Map 2: Cape May Public Access Locations

## B. Improved Public Access Locations

**Map 3 Cape May Improved Public Access Locations**, provides an inventory of the existing public access locations that currently provide access to public trust lands and waters. See Table 1, located in the Appendix, for detailed information regarding each location.



Map 3: Cape May Handicapped Accessible Enhanced Public Access Locations

### C. Limitations to Public Access

The following limitations to public access currently exist:

#### 1. Temporary Restrictions

Cape May offers excellent public access to its waterfront areas. However, the following limitations to public access in Cape May currently exist:

##### Cape Island Creek

Physical public access to Cape Island Creek currently does not exist. Cape Island Creek has visual access from numerous public roadways that intersect or run adjacent to the waterway. Cape May has no desire to improve or facilitate physical access at these locations due to its sensitive environmental nature and safety concerns with abutting roadways or bridges.



Photo 1 - Cape Island Creek



Physical public access to Cape Island Creek is only planned at the planned Lafayette Street Park.

### **Atlantic Ocean Beaches & Promenade**

The City of Cape May maintains over two miles of pristine bathing beaches along the Atlantic Ocean. USLA-certified lifeguarding services are provided daily from May through September with extended evening hours from July through mid-September. Guarded beaches are marked with flags and provided at most street intersections along Beach Avenue. The city provides daily beach cleaning operations comprising mechanized equipment and hand raking from early May through the end of September. There are restroom facility buildings strategically placed along our beachfront which are operational from mid-March to early November. Full access, parking, and related amenities on our Promenade and beaches have been installed for our local and visiting disabled and elderly citizens. Cape May partners in two long-term beach replenishment agreements with state and federal agencies which focus on navigational, shoreline protection, and ecosystem restoration missions, with the creation and enhancement of recreational bathing beaches being a secondary benefit. Affordable beach tag fees are in effect on a daily basis from Memorial Day through Labor Day. Accessories, such as chairs, umbrellas, cabanas, sundries, and snacks/non-alcoholic beverages are available from licensed vendors stationed on most beaches.

The only restricted beach areas are sensitive dune areas which are a necessary flood protection measure. A paved asphalt promenade also offers pedestrians exceptional views of the beach and ocean along portions of the beach front. The promenade is located along Beach Avenue from mid-block between Philadelphia and Madison Avenues to its terminus past Second Avenue at the "Sunset Pavillion". From May 16 and extending through the summer to September 14 ("in-season"), riding or parking a bicycle on the boardwalk, promenade and environs is permitted only between the morning hours of 4:00 a.m. to 10:00 a.m. Beginning September 15 and extending through the winter months until May 15 ("the off-season"), the above limitation on bicycles will not be in effect. Roller skates/in-line skates are also permitted. Electric powered bicycles, scooters and skateboards are prohibited. A seawall extension is proposed in an easterly direction from the terminus and the seawall will be capped with an extension of the promenade.



*Photo 2 - Beach Promenade*

Beach mats have been provided at several locations allowing greater pedestrian access and for those utilizing any type of mobility aid, including for example wheelchairs and walkers. An ordinance has been adopted that provides that no person shall cause or

create any obstruction to use or access to the beach mats. No person may ride or park any type of recreational device on the beach mats at any time. Examples of prohibited recreational devices include, but are not limited to, bicycles, scooters, and skateboards. Accessible wheelchairs with beach accessible wheels have been purchased by the City and are provided at some locations.

For purposes of providing clear directions for City signage on the Beach and Promenade, the following signage ordinance requirement has been provided:

### **Beach Mats**

---

**Beach mats are for pedestrian access only.**

**Walking, wheelchairs, and any other mobility aids are permitted**

**Please watch your step while utilizing and share the road.**

**No Bicycles, skateboards, rollerblades, or any other recreational device are permitted at any time**

**Violators are subject to the penalties set forth in § 158-15**

In season, you must have a beach tag to use Cape May's beaches. Tags are required between the hours of 10:00 a.m. and 5:00 p.m., from Memorial Day in May through Labor Day in September. Beach tags are required for all beachgoers 12 and over.

In order to provide the necessary funds to protect, guard, clean, police, maintain, and otherwise manage the beaches of the City, the following fees are currently (2024-2025) charged:

- No fees shall be charged or collected from any person under the age of 12 years.
- Thirty dollars per person, per season, for seasonal beach tags purchased between December 1 and April 30 of the bathing season.
- Forty dollars per person, per season, for seasonal beach tags purchased on or after April 1 of the bathing season.
- Twenty-five dollars per person, per week, for weekly beach tags, valid from and including Saturday through and including Saturday of the following week, which shall be available during any portion of the bathing season. The last valid date for weekly beach tags shall be imprinted on each weekly beach tag.
- Ten dollars per person, per day, for daily beach tags, which shall be available during any portion of the bathing season.
- Twenty dollars per person, per any consecutive three-day period, for a three-day beach tag, which shall be available during any portion of the bathing season.
- No fees shall be charged to or collected from persons in active military service in any of the Armed Forces of the United States or to their spouse or dependent children over the age of 12 years old.

- No fees shall be charged to or collected from persons who are active members of the New Jersey National Guard who have completed initial active duty training and to their spouse or dependent children over the age of 12 years old. As used in this subsection, "initial active duty training" means basic military training, for members of the New Jersey Air National Guard, and basic combat training and advanced individual training, for members of the New Jersey Army National Guard.
- No fees shall be charged to those persons who have served in any of the Armed Forces of the United States and who were discharged or released therefrom under conditions other than dishonorable and who either have served at least 90 days in active duty or have been discharged or released from active duty by reason of a service-incurred injury or disability ("veterans"). In order to obtain a badge with no fee, such veterans shall present to the City documentation, consistent with laws, rules and regulations promulgated by the Adjutant General of the New Jersey Department of Military and Veterans' Affairs, sufficient to establish entitlement to a badge with no fee.

You can bring coolers and food onto the beaches. However, alcohol is not permitted on Cape May City's beaches. There are a variety of food and drink vendors located along or across Beach Avenue, all along the beachfront, serving up your favorite foods.

Lifeguards typically protect swimmers and surfers until 5:00 PM daily during the summertime. From the last September day of duty to the end of the month, lifeguards and cleanup crews will be getting the beaches and lifeguard headquarters ready for winter. During this winterization process, lifeguards will still respond to emergencies if necessary, but they are not officially on duty.



*Photo 3 - Lifeguard Station*

There are few restrictions on beach tents, beach umbrellas, or beach canopies as long as they are not permanent structures. You are welcome to bring them with you for daytime use. However, you are not permitted to camp overnight on the beaches. Dogs are not allowed on Cape May City beaches during the summer months. By city ordinance, fires are not permitted on Cape May City Beaches, nor may any portable device be used for cooking. Comfort stations are located along the promenade.

Volleyball nets are available at Steger Beach (Beach Ave & Jackson St) and at 2nd Avenue Beach (2nd Avenue & Beach Ave). The nets are located on the beach, so a beach tag is needed to play. BYOB - Bring Your Own Ball.

Jetty and surf fishing is permitted along the beachfront. However, no fishing within 500 feet of bathers is permitted. Surfing/kayaking is also permitted at specific designated locations. Surfing/kayak beaches are located between Howard & Stockton and at 3<sup>rd</sup> Avenue.



*Photo 4 - Comfort Station*

Permanent comfort stations with restrooms and changing facilities are provided at the following locations:

- Beach and Second - Open All Year
- Beach and Broadway
- Beach and Grant
- Beach and Gurney
- Beach and Philadelphia - Open All Year
- Beach and Trenton
- Beach and Wilmington

Open-air rinsing stations have been placed all along the beachfront at beach access locations.

Coolers and food are permitted. No alcohol is permitted. No restrictions on beach tents, umbrellas or canopies for daytime use. No bonfires or cooking are permitted. Overnight camping is prohibited. Ball playing and other games allowed away from beach bathers.

Utilization of the beach and promenade are sometimes restricted by the lack of parking along Beach Avenue during peak times. Parking is restricted by the use of parking meters primarily between Third Avenue and Pittsburgh Avenue. Free parking is located several blocks in on smaller side streets and along Beach Avenue. Bicycle racks are provided at each beach access location.

With some exceptions, parking meters currently are in effect April 1 to October 31, every day, from 10:00 AM to 10:00 PM. All meters are 25 cents per ten minutes and stand-alone meters only accept quarters or Parkmobile. Multi-meters also accept credit cards and Parkmobile. Change is available from several businesses and at beach tag sales booths, during the beach season. The City provides a five (5) minute grace period on all meters, before an overtime violation occurs.

Free parking is available at the Cape May Elementary School located at the intersection of Lafayette Street and Madison Avenue Saturday and Sunday while school is in session and daily during the summer break.

As part of its 50- year contract with the State and the Army Corps of Engineers to replenish the beach on a biennial basis, the City of Cape May Beach Management Plan

For the Protection of Federally & State-Listed Species March 2008 was created to specifically address beach maintenance and protection of threatened and endangered species. This plan specifically addresses access as follows:

*Public access to New Jersey's beaches is a central goal of the NJDEP's Coastal Management Program, as reflected in the State Coastal Zone Management Rules. Public access is also a key requirement of federal and State rules governing beach nourishment carried out with public funds. However, an excessive number of beach access structures in the Protected or Precautionary Zones bring more recreational users into potential conflict with listed species. Such structures can also lead to unauthorized impacts to dunes, as recreational beach users create new, unauthorized walkways through the dunes; these gaps in the dune line fragment nesting and growing areas.*

**City Actions:**

- I. The City will work with the NJDFW and the USFWS to develop written materials regarding protections for listed species and dunes.*
- II. The City will not propose any new beach access points/structures within the Protected or Precautionary Zones as the current number and locations of access points is sufficient and meets current State requirements. If the City determines additional beach access (or a change in location of current access points) is necessary or is required to provide additional access, the City will work with the NJDFW and the USFWS to locate (or relocate), design, and construct any proposed new public access structures to minimize adverse impacts to listed species.*
- III. The City will work with the NJDFW and the USFWS to place appropriate signs regarding protections for listed species and dunes at or near public access points. (See the section on education and outreach)*
- IV. The City will notify homeowners (by a mailing) between Wilmington Avenue and the Poverty Beach Club that they are not permitted to access the beach directly from their homes during the nesting season.*

**NJDFW and USFWS Actions:**

- I. The NJDFW and the USFWS will provide recommendations regarding any proposed new (or relocated) public beach access structures, if it is determined such changes are necessary.*
- II. The NJDFW and the USFWS will provide appropriate signs to post at or near public beach access points (see the section on education and outreach).*

*III. The NJDFW will provide appropriate signs to post near homes between Wilmington Avenue that they are not permitted to access the beach directly from their homes during the nesting season.*

The City of Cape May will continue to comply with the requirements of the Beach Management Plan and coordinate this MPAP with any future updates to the Plan.

### **Cape May Harbor & Tributaries**

Cape May also provides adequate access to the Cape May Harbor and tributaries. Cape May maintains two (2) public parks that abut the Cape May Harbor. Harborview Park is located at Texas Avenue and Harbor Lane and provides a passive park and boardwalk for viewing and enjoyment of the harbor. Physical access is not recommended to the water at this location due to the dangerous stone rip rap shoreline and environmentally sensitive nature of the shoreline. Adequate free parking and ADA accessibility are provided. Upgrades to this park are currently planned.



*Photo 2 - Harborview Park*

The Cape May Lost Fisherman's Memorial is located at Missouri Avenue at the intersection with Harbor Cove. This park provides viewing vantage points over the harbor. Access to the water's edge is provided through the park. This is a popular kayak launching location. Adequate free parking and ADA accessibility are provided.

Additional locations of access to Cape May Harbor are provided along Delaware Avenue. These locations are located at various street intersections and some physical improvements including ramps and unimproved shoulder parking areas facilitate access to the harbor. The neighboring Nature Center of Cape May, Corinthian Yacht Club and US Coast Guard Housing residents also utilize these access points. Shoreline protection projects in this area are proposed.

## **2. Permanent Restrictions**

The City of Cape May currently provides exceptional access to its natural resources. However, protection of these environmentally sensitive areas maintains a priority so that these resources remain viable and that they may be preserved for future generations. Access to environmentally sensitive areas including East Cape May and Cape Island Creek should be restricted and only accessed by properly planned public access projects.

The following locations are noted in the Public Access Inventory where public access will not be provided or otherwise improved due to any one of the following reasons:

1. Elmira Street - Cape Island Creek

Physical Public Access in this location will create conditions that endanger public health and safety. Physical Access in this location could damage the sensitive environment.

2. US Coast Guard Station/East Cape May

Access in this location could create significant vulnerability to homeland security. Physical Access in this location could damage the environment. Most areas are controlled by the US Coast Guard and not Cape May.

3. Beach Dunes

Access in dune locations could damage the environment and weaken or compromise flood prevention measures.

### **III. Community Needs Assessment**

Cape May City has performed a community needs assessment. The methods and results are described in the following section:

Cape May has always been responsive to the needs of both residents and visitors. The Cape May Planning Board during its Cape May Master Plan Reexamination dated February 27, 2009 – Last Revised March 13, 2009, considered the public access needs of the community at numerous public workshop meetings. Both the existing public access facilities and the community's needs were examined as part of the adoption of this document. In addition, the City through meetings of the City Council, Planning Board and other civic bodies, regularly hears residents and visitors express their needs and desires regarding public access. The key points of these forums are summarized in the following section that was implemented into the master plan:

1. The public access needs of the Cape May community is a priority of the City and this plan. Access to the Atlantic Ocean and beaches, Cape May Harbor and Cape Island Creek for entertainment and enjoyment plays a great role in giving Cape May its distinctive sense of place.
2. Maintenance of our beach and access to it is also a priority of the City. The City must continue to maintain its ongoing 50- year contract with the State and the Army Corps of Engineers to replenish the beach on a biennial basis, thus safeguarding this principal resource. Safety of the community is also an essential public necessity. Beach maintenance will be made in accordance with approved plans to protect the public and ensure protection of endangered species. Environmentally sensitive areas should not be compromised and public access should be provided only in appropriate locations.

3. It is not the intent of this plan to address all community needs such as access for boating. Private businesses within the City and in neighboring communities provide ample marinas, boating ramps, dockage or other boating improvements.
4. Routine dredging of the Cape May Harbor and Canal is necessary for boating, and the City of Cape May shall support any effort to address this issue.
5. Access Need - Physical Access to Cape May Harbor at Harborview Park. As detailed in the Temple University study dated May 5, 2010, Harborview Park maintains a visual waterfront link to Cape May Harbor. Implementing the conceptual physical improvements that include a fishing pier would provide physical interactive access opportunities.
6. Access Need - Physical and Visual Access at Cape Island Creek at the Lafayette Street Open Space Project. Very little access to Cape Island Creek exists along the Lafayette Street corridor. The proposed Lafayette Street Open Space is a park project proposed next to the Cape May Elementary School. Park improvements include recreation athletic fields, landscaping, dog park, picnic areas and a walking path along the wetlands that will provide access to the Cape Island Creek.
7. Lengthening of the asphalt promenade along the beachfront eastwardly is a priority.
8. Because Cape May already has exceptional access planning and implementation in place, the City must strive to maintain and improve existing access wherever possible. The exceptional access points offered along its 2.5 mile beach strand shall be maintained and improved where possible. The City has already made accessible improvements at many beach access points and should continue to seek grants and make improvements to provide additional accessible showers, decks, and tables where possible.

## **IV. Implementation Plan**

The City of Cape May has created an Implementation Plan composed of Priorities, Preservation of Public Access Locations, Signage, Proposed Access Improvements and Facilities, and Municipal Tools for Implementation as described in the following section:

### **A. Priorities**

Cape May City has developed the following priorities:

1. **Maintain Existing Public Access**
  - a. Maintain and preserve all existing access points and signage. As noted in the Community Needs Assessment, addressing community needs for public access is a priority of this plan. Access to the Atlantic Ocean and beaches, Cape May Harbor and Cape Island Creek for



entertainment and enjoyment plays a great role in giving Cape May its distinctive sense of place.

- b. Maintain Cape May's beachfront and access to it. The City must continue to maintain its ongoing 50- year contract with the State and the Army Corps of Engineers to replenish the beach on a biennial basis, thus safeguarding this principal resource. Safety of the community is also an essential public necessity. Beach maintenance will be made in accordance with approved plan to protect the public and ensure protection of endangered species. Environmentally sensitive areas such as dunes should not be compromised and public access should be provided only in appropriate locations.
- c. Support the preservation and viability of existing private access areas in Cape May. It is not the intent of this plan to address all community needs such as access for boating. Private businesses and clubs/organizations within the city and in neighboring communities provide ample marinas, boating ramps, dockage or other boating improvements.
- d. Cape May Harbor and Canal: Routine dredging of the Cape May Harbor and Canal is critical to the recreational boating, marine and commercial fishing industries in Cape May and surrounding communities. The City shall support any effort to address this issue.
- e. Beach Promenade: Maintain and preserve the asphalt promenade.



**Photo 6 - Beach Promenade**

- f. Maintain and improve existing public access points: Because Cape May already has exceptional access planning and implementation in place, the City must strive to maintain and improve existing access wherever possible. The exceptional access points offered along its 2.5 mile beach strand shall be maintained and improved where possible. The City has already made accessible improvements at many beach access points and should continue to

seek grants and make improvements to provide additional accessible showers, decks, tables and beach mats where possible.

The City has already implemented and achieved the goals of several of these goals as discussed in this plan.

**a. Tools**

Cape May currently has existing ordinances that dedicate funding towards beach management and access. Public works currently provides the workforce to implement maintain and manage the beaches and access points. They also maintain the existing signage and public parks that are essential to this plan. All other improvements that are planned will be maintained by Public Works once they are completed.

**b. Cost and Funding**

Costs are project specific and are estimated during the planning and design phases for each project. Beach tag fees (as set forth in the ordinance) and the City's municipal budget are used to implement, fund, design , construct, and maintain all improvements related to public access.

**2. Preserving Public Access**

The public access locations that are currently located on the municipal Recreation and Open Space Inventory (ROSI) are attached hereto in the Appendix. Any future municipally owned properties providing public access will be protected, through placement of the property providing access on the municipal Recreation and Open Space Inventory (ROSI) or it can be preserved through easements or other legal methods. Virtually all public access lands are owned and controlled by the City or the NJDEP. Cape May does not have a problem with privately owned access restrictions along its beachfront or harbor front area.

**a. Tools**

Preserving public access will be achieved through planning board planning action and municipal governing body implementation.

**b. Cost and Funding**

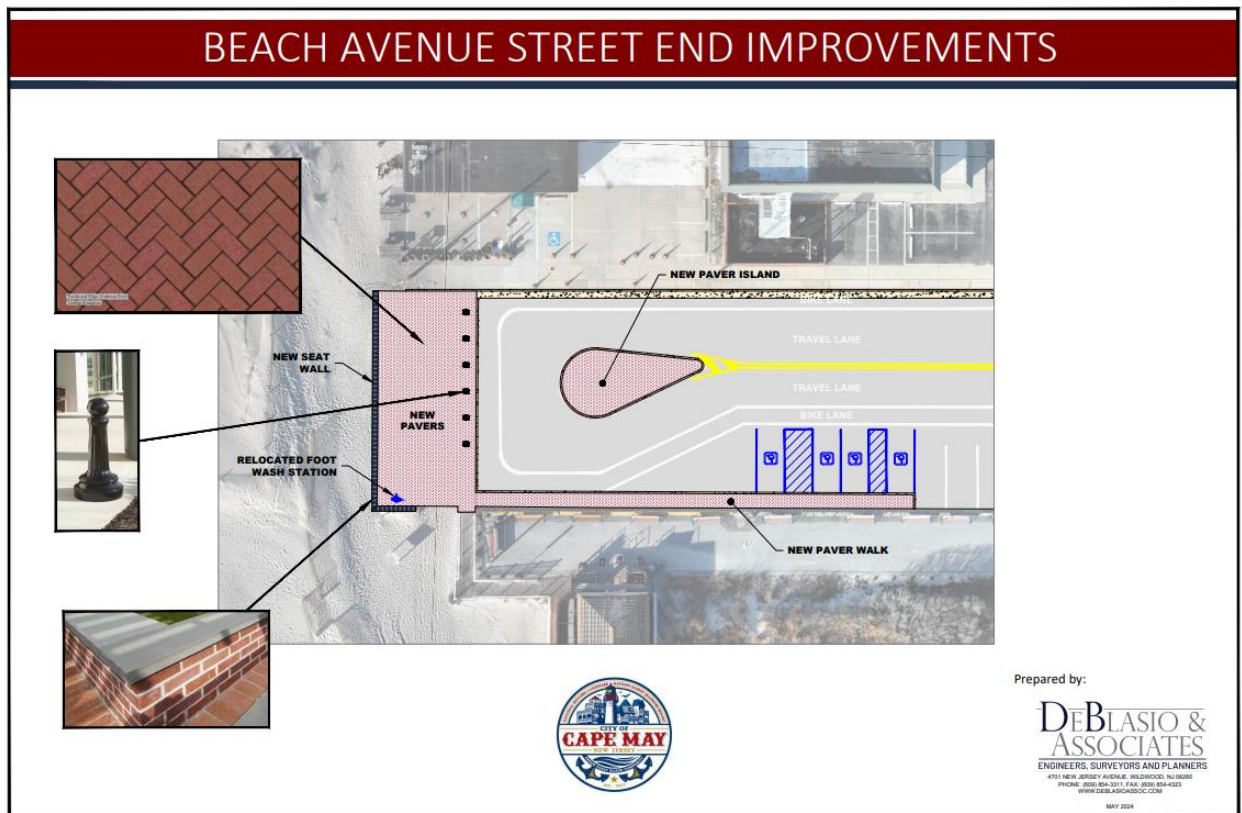
Costs are project specific and are estimated during the planning and design phases for each project. Beach tag fees (as set forth in the ordinance) and the City's municipal budget are used to implement, fund, preserve, and maintain all improvements related to public access.

**3. Proposed Locations and Facilities**

Cape may has been very proactive in planning public access related projects. The following projects are planned (funding sources and schedule are included):

## CURRENT CONSTRUCTION PROJECTS IN THE CITY OF CAPE MAY

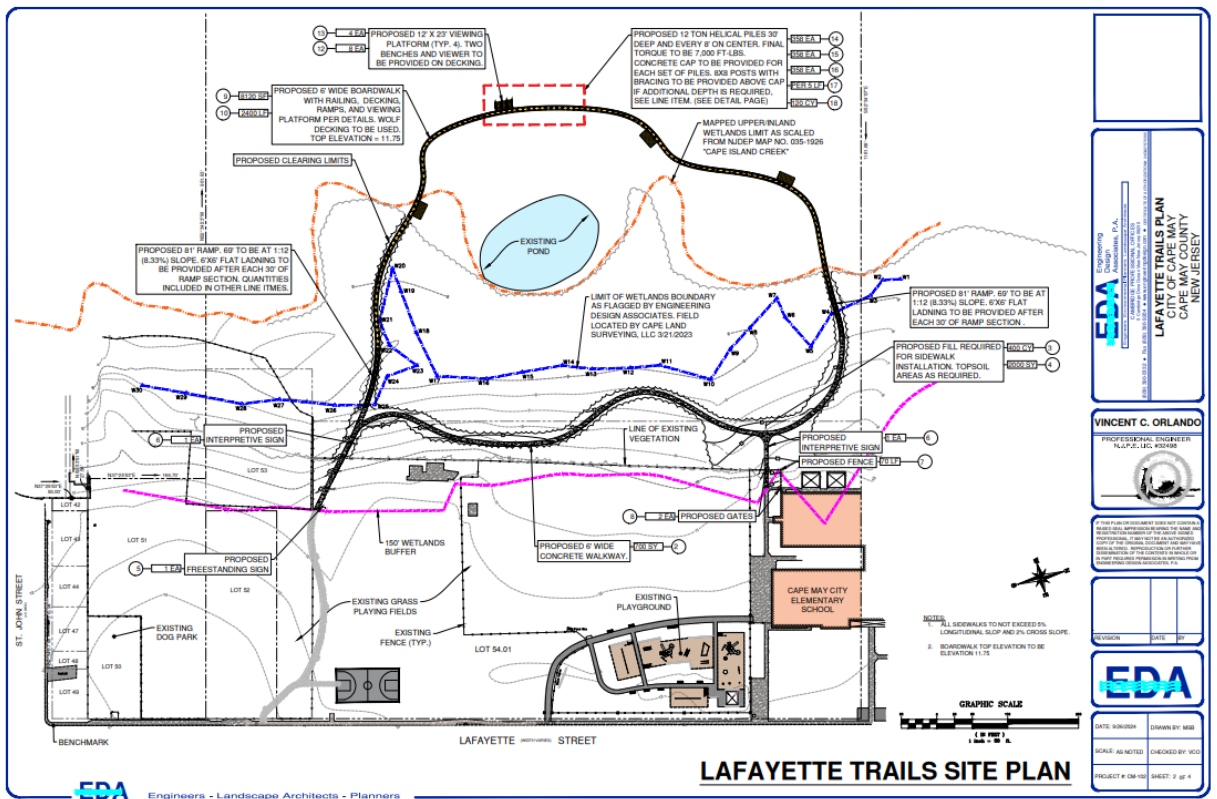
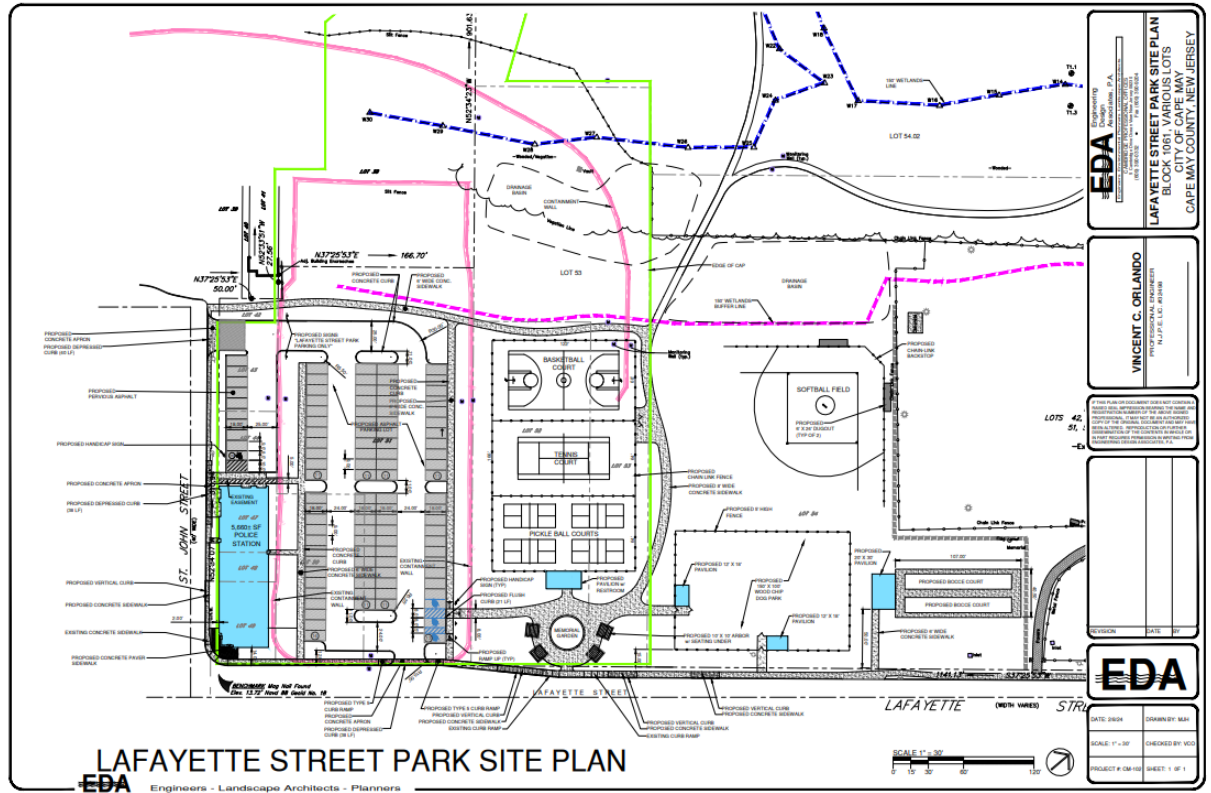
- A. **BEACH AVE.** – CITY PROJECT – Reconstruction of the road and pedestrian & bicycle enhancement at the street end. Project Contract awarded to Charles Marandino LLC for \$499,730.00. Construction has begun. Paving scheduled for Thursday Dec. 12<sup>th</sup>, 2024. For more information: Beach Avenue Striping Plans.pdf and Beach Avenue Rendering 2024.pdf at the following website: <https://www.capemaycity.com/ConstructionProjects>



- B. **HARBORVIEW PARK** - COUNTY GRANT - Rehabilitation of existing passive park. County grant was approved for \$1,933,172.80. The HPC and SHPO have approved the project. Anticipated construction Winter 2025. More information at the following website: <https://www.capemaycity.com/ConstructionProjects> **Harborview Park Plan.pdf**



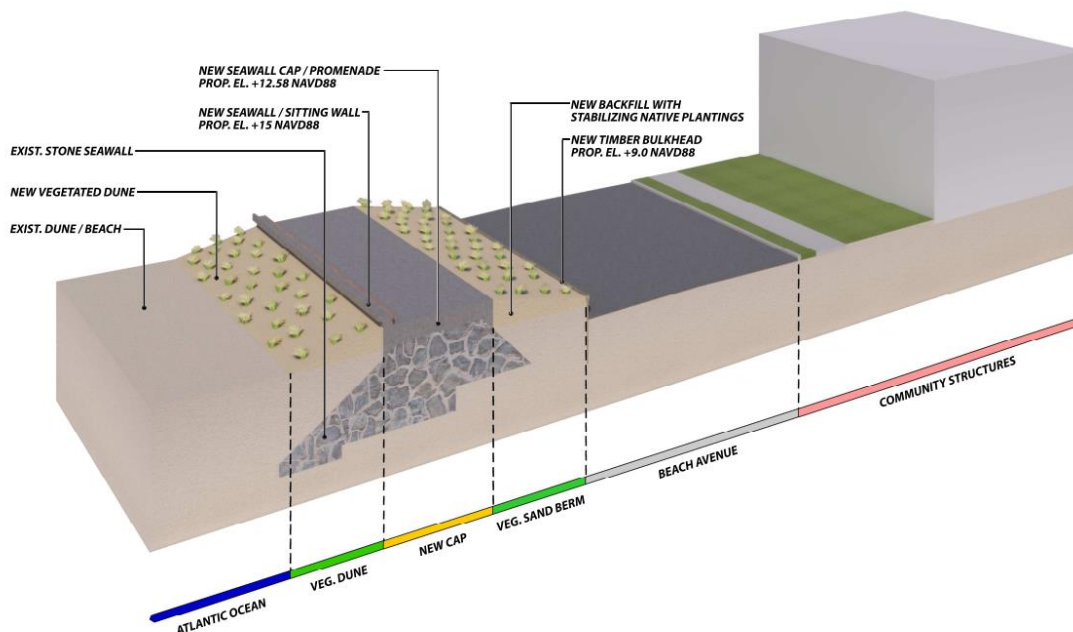
- C. **LAFAYETTE STREET PARK - CITY PROJECT** - This project has been in the planning and design phase for several years. We have finally moved through some of the permitting and environmental clean-up phases. We anticipate construction on several of the phases starting later this year. Phases we will complete this fall/winter will include:
- Solid safety surfacing on the playground, completed \$240,000;
  - Cape May Nature Trails. Project contract awarded to Massett Building Co. for \$1,869,475 with County Open Space grant of \$1,933,172.80. Project to start week of December 16<sup>th</sup>, 2024;
  - Relocate dog park and construct bocce court & open space area Project contract awarded to Think Pavers for \$868,416.43. The City has NJDEP Green Acres loan funding for this project. More information at the following website: <https://www.capemaycity.com/ConstructionProjects>: Lafayette Street Nature Trails and Lafayette Street Park Site Plan 6.17.24.



- D. **BEACHFILL** – Lower Cape May Meadows – Cape May Point Project – US Army Corps of Engineers. Project awarded to Agate Construction. Work began December 5, 2024. More Information at: <https://www.nap.usace.army.mil/Missions/Civil-Works/Coastal-Storm-Risk-Management/Lower-Cape-May-Meadows-Cape-May-Point/>

#### **FUTURE CONSTRUCTION PROJECTS IN THE CITY OF CAPE MAY**

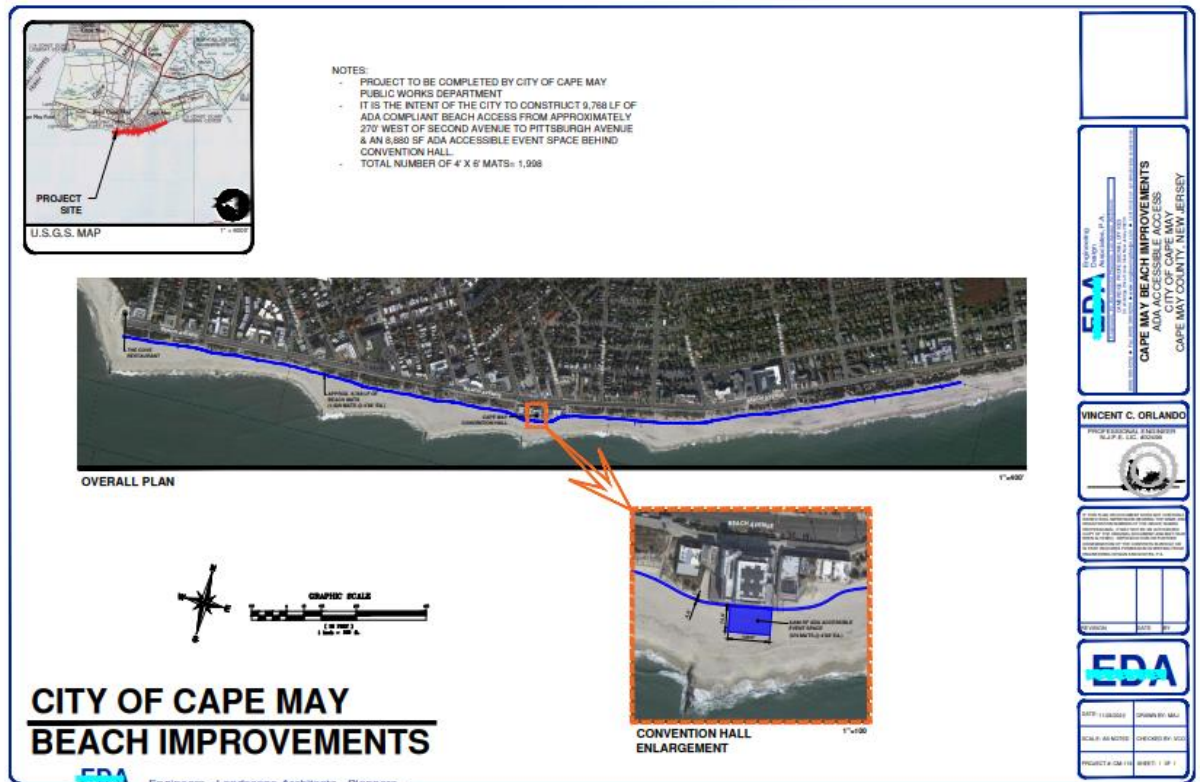
- E. **PROMENADE PRESERVATION** - CITY PROJECT – City received a grant from the state in amount of \$6.7M. The City submitted the Master Plan & Preliminary Visioning plan dated October 25, 2023 to the State which describes the work the City needs to do to maintain the existing promenade, upgrade ADA access and provide resiliency. The City Manager presented a work plan to create several small projects to encumber the grant funds received at City Council meeting on April 2nd. Work will be based on scope of work presented in the Promenade Master Plan. City is working on obtaining proposals from consultant to prepare the engineering & design work. For more information at the following website: <https://www.capemaycity.com/ConstructionProjects: Promenade Master Plan - Colliers Oct. 2023.pdf>
- F. **SEAWALL EXTENSION** - CITY PROJECT & U.S. ARMY CORP OF ENGINEERS (USACE) PROJECT - Work will include extending the seawall and promenade from the existing terminus just East of Madison Ave to Wilmington Ave and extend down Wilmington Ave. The City has received HPC, SHPO and NJDEP CAFRA Permit for the project. The City anticipates completing final design in 2024. The City has been awarded a FEMA Flood Mitigation Assistance Grant and has been identified for further review. The City has begun the review with FEMA but have to complete our permit conditions for the NJDEP CAFRA permit before we can proceed. The USACE project extends 200 ft each side of the Wilmington Ave – Beach Ave Intersection. The USACE is in the final design stages and working on Project Partnership Agreement. More information at the following website: <https://www.capemaycity.com/ConstructionProjects: Seawall Plans, Seawall Landscape Plans, USACE Feasibility Report, Seawall Renderings>.



**CAPE MAY SEAWALL CONCEPT**  
**CROSS SECTION - PROPOSED CONDITIONS**  
 OCTOBER 2022



- G. **LIFEGUARD STATION** - CITY PROJECT - Work will include upgrading facility for adequate men/women locker room and restrooms. No expansion vertically or horizontally is planned. Preliminary design phase and no budget has been established.
- H. **DELAWARE AVE REVETMENT** - U.S. ARMY CORP OF ENGINEERS (USACE) AND COUNTY PROJECT - Work will include installing stone revetment along Delaware Ave and Cape May Harbor from Just East of Baltimore St to just West of Corinthian Yacht Club of Cape May. Anticipated construction during 2025. More information at the following website: <https://www.capemaycity.com/ConstructionProjects: Draft Plans Delaware Ave revetment.pdf>
- I. **BEACH MAT PROJECT** – CITY PROJECT It is the intent of the city to construct 9,768 lf of ADA compliant beach access from approximately 270' west of Second Avenue to Pittsburgh Avenue & an 8,880 sf ADA accessible event space behind Convention Hall. The project to be completed by City of Cape May Public Works Department. The Phase 1 ADA access mat was completed from the Cove to Howard Street. Its is hoped to continue from Howard Street to Madison Avenue in 2025.



**a. Tools**

Specific tools and implementation are listed above for each project.

**b. Cost and Funding**

ADA mats along the beach, purchase of an additional 12 ADA beach wheelchairs and the upgrade Mt. Vernon beach crossover were funded as part of a \$400,000.00 DCA Small Cities Grant. Cape May City Nature Trails – 1.3 mile nature trail and elevated platform to overlook into coastal wetland marsh was funded by a Cape May County Grant: \$1,868,000. Specific costs and funding sources are listed above for the other projects.

**B. Signage**

The City of Cape May has provided the following signage:

Cape May provides signage at all beach access locations and the promenade as typically depicted below:





Photo 7 - Typical Signage at Beach Access



Photo 8 - Typical Signage at Beach Access



Photo 9 - Beach Access Typical Signage



Photo 10 - Signage at Sunset Pavilion



Photo 11 - Signage at Promenade



Photo 12 - Promenade Signage



**Photo 13 - Signage at Cape May Harbor Access**



**Photo 14 - Harborview Park Signage**

Beach mat signage is already implemented by ordinance. N.J.A.C. 7:7-16.9(u) requires that public access to tidal waterways and their shores shall be clearly marked. Should the existing signage be deemed not adequate, Department-approved public access signs shall be installed at each public access way, public access area and/or public parking area at the development site and maintained in perpetuity by the permitted entity and its successors in title and interest. If further required, Cape May will adopt a municipal ordinance requiring public access signage identifying the access shall be installed at each public access way, public access area and/or public parking area at all locations identified in this plan and maintained in perpetuity by the City.

**C. Army Corps of Engineers Requirements for Shore Protection Projects**

Cape May has met the ACOE Requirements as follows:

Cape May has complied with all ACOE beach fill requirements for all beach fill projects. Cape May has or is currently permitting with the ACOE for all projects including the seawall and promenade extension.

**V. Relationship to the Other Regional and State Plans**

The City of Cape May's MPAP has been reviewed for consistency and has the following relationship to other Regional and State Plans:

State Development and Redevelopment Plan ("2001 State Plan") and the Cape May County Master Plan (adopted January 20, 2022) have been reviewed. This plan is consistent with these plans' objectives, goals and recommendations.

**VI. Resolution of Incorporation**

The City of Cape May has approved a resolution for the incorporation of the MPAP. See Appendix 1 for the resolution.

After Department approval of the MPAP, the municipality will adopt the MPAP into their Master Plan. This draft will be replaced upon adoption.

Approval of this plan does not eliminate the need for any Federal, State, County or municipal permits, certifications, authorizations or other approvals that may be required by the Applicant, nor shall the approval of this plan obligate the Department to issue any permits, certifications, authorizations or other approvals required for any project described in this plan.

**APPENDIX 1**

**Model Resolution for Incorporating MPAP into Master Plan**  
(upon adoption the final resolution will replace this model)

Resolution # \_\_\_\_\_

Title: A RESOLUTION APPROVING THE MUNICIPAL PUBLIC ACCESS PLAN

WHEREAS, the *City of Cape May's* Municipal Public Access Plan (MPAP) was submitted to the Township Council and reviewed at the regular meeting of *{date}*, and

WHEREAS, the governing body has approved the plan as submitted, and

WHEREAS, the governing body recognizes the need to make the MPAP an authorized component of municipal decision-making by incorporating it into the municipal master plan,

NOW, THEREFORE, BE IT RESOLVED by the *governing body* of *City of Cape May* the "*City of Cape May* Municipal Public Access Plan," a copy of which is attached, is hereby approved.

FURTHER RESOLVED, the MPAP shall be incorporated into the municipal master plan within the Conservation Element.

FURTHER RESOLVED a copy of the plan shall be sent to the New Jersey Department of Environmental Protection for review and approval in accordance with N.J.A.C.7.7.

I hereby certify the foregoing to be a resolution adopted by the *City of Cape May* at a meeting held on *{date}*.

\_\_\_\_\_  
Municipal Clerk

## Appendix 2 Public Access Table

**Table 1 Cape May City Public Access Location Amenities**

ID	SIGNS	PARKING	STREET	CROSS STREET	BADGE	SWIMMING	FISHING	SURFING	PLAYGROUND	PARK	PIER	BOAT LAUNCH	MARINA	RESTROOM	H/C	SHORELINE	ACCESS TYPE
1	No	Street, Free	Maryland Ave (East terminus)	Buffalo Ave	Yes	No	No	No	No	No	No	No	No	No	None	Beach	Visual
2	Yes	Street, Free	New York Avenue	(Walkway Near East Terminus)	Yes	Guard	Limitations	Limitations	No	No	No	No	No	No	None	Beach	Beach
3	Yes	Street, Free	Wilmington Ave	New Jersey Ave	Yes	Guard	Limitations	Limitations	No	No	No	No	No	Yes	Parking/Ramp/Restroom	Beach	Beach
4	Yes	Street, Free	Beach Ave	Wilmington Ave	Yes	Guard	Limitations	Limitations	No	No	No	No	No	No	None	Beach	Beach
5	Yes	Street, Free	Beach Ave	Brooklyn Ave	Yes	Guard	Limitations	Limitations	No	No	No	No	No	No	None	Beach	Beach
6	Yes	Street, Free	Beach Ave	Baltimore Ave	Yes	Guard	Limitations	Limitations	No	No	No	No	No	No	None	Beach	Beach
7	Yes	Street, Free	Beach Ave	Pittsburgh Ave	Yes	Guard	Limitations	Limitations	No	No	No	No	No	No	Ramp	Beach	Beach
8	Yes	Street, Free	Beach Ave	Trenton Ave	Yes	Guard	Limitations	Limitations	No	No	No	No	No	No	Ramp/Restroom	Beach	Beach
9	Yes	Street, Pay	Beach Ave	Reading Ave	Yes	Guard	Limitations	Limitations	No	No	No	No	No	No	None	Beach	Beach
10	Yes	Street, Pay	Beach Ave	Philadelphia Ave	Yes	Guard	Limitations	Limitations	No	No	No	No	No	Yes	Ramp/Restroom	Beach	Beach
11	Yes	Street, Pay	Beach Ave	Midblock between Philadelphia & Madison	Yes	Guard	Limitations	Limitations	No	No	No	No	No	No	None	Beach	Beach
12	Yes	Street, Pay	Beach Ave	Madison Ave	Yes	Guard	Limitations	Limitations	No	No	No	No	No	No	Ramp	Beach	Beach
13	Yes	Street, Pay	Beach Ave	Queen Street	Yes	Guard	Limitations	Limitations	No	No	No	No	No	No	None	Beach	Beach
14	Yes	Street, Pay	Beach Ave	Jefferson Street	Yes	Guard	Limitations	Limitations	No	No	No	No	No	No	Ramp	Beach	Beach
15	Yes	Street, Pay	Beach Ave	Howard Street	Yes	Guard	Limitations	Unrestricted	No	No	No	No	No	No	Parking/Ramp	Beach	Beach
16	Yes	Street, Pay	Beach Ave	Stockton Place	Yes	Guard	Limitations	Unrestricted	No	No	No	No	No	No	Parking/Ramp/Restroom	Beach	Beach
17	Yes	Street, Pay	Beach Ave	Gurney Street	Yes	Guard	Limitations	Limitations	No	No	No	No	No	Yes	Parking/Ramp/Restroom	Beach	Beach
18	Yes	Street, Pay	Beach Ave	Ocean Street	Yes	Guard	Limitations	Limitations	No	No	No	No	No	No	Ramp	Beach	Beach
19	Yes	Street, Pay	Beach Ave	Decatur Street	Yes	Guard	Limitations	Limitations	No	No	No	No	No	No	Ramp	Beach	Beach
20	Yes	Street, Pay	Beach Ave	Jackson Street	Yes	Guard	Limitations	Limitations	No	No	No	No	No	No	Ramp	Beach	Beach
21	Yes	Street, Pay	Beach Ave	Midblock between Jackson & Perry	Yes	Guard	Limitations	Limitations	No	No	No	No	No	No	None	Beach	Beach
22	Yes	Street, Pay	Beach Ave	Perry Street	Yes	Guard	Limitations	Limitations	No	No	No	No	No	No	Parking/Ramp	Beach	Beach
23	Yes	Street, Pay	Beach Ave	Congress Street	Yes	Guard	Limitations	Limitations	No	No	No	No	No	No	Ramp	Beach	Beach
24	Yes	Street, Pay	Beach Ave	Windsor Ave	Yes	Guard	Limitations	Limitations	No	No	No	No	No	No	Ramp	Beach	Beach
25	Yes	Street, Pay	Beach Ave	Grant Street (Lifeguard Sta.)	Yes	Guard	Limitations	Limitations	No	No	No	No	No	No	Ramp	Beach	Beach
26	Yes	Street, Pay	Beach Ave	Midblock between Grant & Patterson	Yes	Guard	Limitations	Limitations	No	No	No	No	No	Yes	Restroom	Beach	Beach
27	Yes	Street, Pay	Beach Ave	Patterson Ave	Yes	Guard	Limitations	Limitations	No	No	No	No	No	No	Ramp	Beach	Beach
28	Yes	Street, Pay	Beach Ave	Broadway	Yes	Guard	Limitations	Limitations	No	No	No	No	No	Yes	Parking/Ramp	Beach	Beach
29	Yes	Street, Pay	Beach Ave	First Ave	Yes	Guard	Limitations	Limitations	No	No	No	No	No	No	None	Beach	Beach
30	Yes	Street, Pay	Beach Ave	Second Ave	Yes	Guard	Limitations	Limitations	No	No	No	No	No	Yes	None	Beach	Beach
31	Yes	Street, Pay	Beach Ave	Third Ave (Sunset Pavilion)	Yes	Guard	Limitations	Unrestricted	No	No	Pavillion	No	No	No	Parking	Beach	Beach/Visual Pavilion
32	Yes	Street, Pay	Third Ave	Mount Vernon Ave (West Terminus)	Yes	Guard	Limitations	Unrestricted	No	No	Boardwalk	No	No	No	None	Beach	Beach/Visual Boardwalk
33	Yes	Street, Pay	Second Ave	(North Terminus)	N/A	No	No	No	No	No	No	No	No	No	Yes	Creek	Visual
34	Yes	Street, Pay	First Ave	(North Terminus)	N/A	No	No	No	No	No	No	No	No	No	None	Creek	Visual
35	Yes	Street, Free	Elmira Street	West of Bank Street (Bridge @ Cape Island Creek)	N/A	No	No	No	No	No	No	No	No	No	ADA Sidewalk access	Creek	Visual
36	Yes	Street, Free	Texas Ave (Harborview Park)	Harbor Lane	N/A	No	No	No	No	No	Boardwalk	No	No	No	Parking/Ramp	Harbor	Visual
37	Yes	Street, Free	Missouri Ave (Fisherman's Memorial)	Baltimore Ave	No	At Own Risk	Unrestricted	Unrestricted	No	No	No	Yes/Kayak	No	No	Parking	Harbor	Fish/Boat/Visual
38	Yes	Street, Free	Delaware Ave	Brooklyn Ave (North Terminus)	No	At Own Risk	Unrestricted	Unrestricted	No	No	No	Yes/Kayak	No	No	Ramp	Harbor	Fish/Boat/Visual
39	Yes	Street, Free	Delaware Ave	Wilmington Ave (North Terminus)	No	At Own Risk	Unrestricted	Unrestricted	No	No	No	Yes/Kayak	No	No	None	Harbor	Fish/Boat/Visual
40	Yes	Street, Free	Delaware Ave	Commanders Way	No	At Own Risk	Unrestricted	Unrestricted	No	No	No	Yes/Kayak	No	No	None	Harbor	Visual
41	Yes	Street, Free	Delaware Ave	Buffalo Ave	No	At Own Risk	Unrestricted	Unrestricted	No	No	No	Yes/Kayak	No	No	None	Harbor	Fish/Boat/Visual

Explanation of table:

SIGNS: Does the location provide signage identifying the location as a point of public access? Yes or No

PARKING: Is parking for the location/facility provided on the street or in a lot and is it free or do you have to pay? Street, free; Street, pay; Lot, free, Lot, pay

STREET: On what street is the public access located?

CROSS STREET: What is the cross street where this location is located?

BADGE: Are there times when a badge is required to use this location? Yes or No

SWIMMING: Is swimming permitted at this location? Yes or No (Limitations on swimming, such as hours, lifeguards, etc., are discussed in Section II.B and C)

FISHING and SURFING: Is fishing/surfing permitted at this location? Yes or No (Limitations/restrictions are discussed in the Section II.B and C)

PLAYGRD, PARK, PIER, BOATLNCH, MARINA, RESTRMS: Does this location include these amenities? Yes or No

H/C: What amenities are handicap accessible at this location/facility? (Not necessarily ADA Compliant) None, Parking reserved, Ramp provided, and/or Restrooms accessible

SHORELINE: What shoreline does this location inhabit? Ocean, Bay, River and/or inlet

ACCESS TYPE: Describe the type of access: Beach, Fishing, Boat, and/or Visual

[This imbedded Excel spread sheet should be used for the table described in Section II (Public Access). The title of each column should not be changed. The information about each public access location should be filled in using one of the options listed. This table will also be used to populate the information for each public access location in GIS. Additional information about each public access location can be included in the narrative portion of Section II. Please contact DEP with any questions or concerns about these options. ]

**APPENDIX 3**  
**Recreation and Open Space Inventory**  
Source: <https://dep.nj.gov/otpla/rosi/>

---



County: CAPE MAY Municipality: CAPE MAY CITY

Block	Lot	Facility Name	Interest	Type
1000	1	BEACH FRONT TOTAL FOR CIT	FEE	MCounty: CAPE MAY Municipality: CAPE MAY CITY

Block	Lot	Facility Name	Interest	Type
1000	1	BEACH FRONT TOTAL FOR CIT	FEE	M
1000	10	BEACH FRONT	FEE	M
1000	11	BEACH FRONT	FEE	M
1000	12	BEACH FRONT	FEE	M
1000	13	BEACH FRONT	FEE	M
1000	14	BEACH FRONT	FEE	M
1000	15	BEACH FRONT	FEE	M
1000	16	BEACH FRONT	FEE	M
1000	17	BEACH FRONT	FEE	M
1000	18	BEACH FRONT	FEE	M
1000	19	BEACH FRONT	FEE	M
1000	2	BEACH FRONT TOTAL FOR CIT	FEE	M
1000	20	BEACH FRONT	FEE	M
1000	21	BEACH FRONT	FEE	M
1000	22	BEACH FRONT	FEE	M
1000	23	BEACH FRONT	FEE	M
1000	24	BEACH FRONT	FEE	M
1000	25	BEACH FRONT	FEE	M
1000	26	BEACH FRONT	FEE	M
1000	28	BEACH FRONT	CR	M
1000	29.01	BEACH FRONT	FEE	M
1000	3	BEACH FRONT TOTAL FOR CIT	FEE	M
1000	30	BEACH FRONT	FEE	M
1000	31	BEACH FRONT	FEE	M
1000	32	BEACH FRONT	FEE	M
1000	33	BEACH FRONT	FEE	M
1000	34	BEACH FRONT	CR	M
1000	35	BEACH FRONT	FEE	M
1000	37	BEACH FRONT	FEE	M
1000	4	BEACH FRONT TOTAL FOR CIT	FEE	M

Block	Lot	Facility Name	Interest Type	
1000	43	BEACH FRONT	FEE	M
1000	44	BEACH FRONT	FEE	M
1000	48	BEACH FRONT	FEE	M
1000	49	BEACH FRONT TOTAL FOR CIT	FEE	M
1000	5	BEACH FRONT TOTAL FOR CIT	FEE	M
1000	50	BEACH FRONT TOTAL FOR CIT	FEE	M
1000	51	BEACH FRONT	FEE	M
1000	52	BEACH FRONT	FEE	M
1000	53.01	BEACH FRONT	FEE	M
1000	57	BEACH FRONT	FEE	M
1000	58	BEACH FRONT	FEE	M
1000	59	BEACH FRONT	FEE	M
1000	6	BEACH FRONT TOTAL FOR CIT	FEE	M
1000	63.01	BEACH FRONT	FEE	M
1000	64	BEACH FRONT	FEE	M
1000	65	BEACH FRONT	FEE	M
1000	7	BEACH FRONT TOTAL FOR CIT	FEE	M
1000	8	BEACH FRONT	FEE	M
1000	9	BEACH FRONT	FEE	M
1000	NONE	OPEN SPACE MEDIAN STRIP	FEE	M
1004	2	OPEN SPACE	FEE	M
1004	3	OPEN SPACE	FEE	M
1006	1	OPEN SPACE	FEE	M
1006	2	OPEN SPACE	FEE	M
1006	24	OPEN SPACE	FEE	M
1006	25	OPEN SPACE	FEE	M
1006	26	OPEN SPACE	FEE	M
1006	27	OPEN SPACE	FEE	M
1006	3	OPEN SPACE	FEE	M
1006	4	OPEN SPACE	FEE	M
1006	5	OPEN SPACE	FEE	M
1006	6	OPEN SPACE	FEE	M
1006	7	OPEN SPACE	FEE	M
1008	1	OPEN SPACE	FEE	M
1008	19	OPEN SPACE	FEE	M
1008	2	OPEN SPACE	FEE	M
1008	20	OPEN SPACE	FEE	M
1008	21	OPEN SPACE	FEE	M

Block	Lot	Facility Name	Interest	Type
1008	22	OPEN SPACE	FEE	M
1008	3	OPEN SPACE	FEE	M
1008	4	OPEN SPACE	FEE	M
1008	5	OPEN SPACE	FEE	M
1008	6	OPEN SPACE	FEE	M
1010	1	OPEN SPACE	FEE	M
1010	18	OPEN SPACE	FEE	M
1010	19	OPEN SPACE	FEE	M
1010	2	OPEN SPACE	FEE	M
1010	20	OPEN SPACE	FEE	M
1010	21	OPEN SPACE	FEE	M
1010	22	OPEN SPACE	FEE	M
1010	3	OPEN SPACE	FEE	M
1010	4	OPEN SPACE	FEE	M
1010	5	OPEN SPACE	FEE	M
1010	6	OPEN SPACE	FEE	M
1010	7	OPEN SPACE	FEE	M
1012	1	OPEN SPACE	FEE	M
1012	18	OPEN SPACE	FEE	M
1012	19	OPEN SPACE	FEE	M
1012	20	OPEN SPACE	FEE	M
1012	21	OPEN SPACE	FEE	M
1012	22	OPEN SPACE	FEE	M
1026		NONE INDIANA & MISSOURI MINI PARK	FEE	M
1045	1	ROTARY PARK	FEE	M
1045	2	ROTARY PARK	FEE	M
1045	3	ROTARY PARK	FEE	M
1045	4	ROTARY PARK	FEE	M
1045	5	ROTARY PARK	FEE	M
1045	6	ROTARY PARK	FEE	M
104A	52	OPEN SPACE	FEE	M
104A	52E	OPEN SPACE	FEE	M
104A	52J	OPEN SPACE	FEE	M
104A	52K	OPEN SPACE	FEE	M
1059	9	COLONIAL HOUSE PARK	FEE	M
1061	51	LAFAYETTE STREET PLAYGROU	FEE	M
1100		NONE MEDIAN STRIP CAPE MAY AVE	FEE	M
1108	1	HARRY LOZOUR PARK	FEE	M

Block	Lot	Facility Name	Interest Type	
1108	2	HARRY LOZOUR PARK	FEE	M
1110	10	WM. MOORE TENNIS CENTER	FEE	M
1110	11	WM. MOORE TENNIS CENTER	FEE	M
1110	12	PHYSICK ESTATE PARK	FEE	M
1110	13	WM. MOORE TENNIS CENTER	FEE	M
1110	14	PHYSICK ESTATE PARK	FEE	M
1110	8	PHYSICK ESTATE PARK	FEE	M
1110	9	WM. MOORE TENNIS CENTER	FEE	M
1114	1	PENNSYLVANIA & MICHIGAN M	FEE	M
1125	NONE	INDIANA & MISSOURI MINI PARK	FEE	M
1127	1	MASS AVE MINI PARK	FEE	M
1127	2	MASS AVE MINI PARK	FEE	M
1173	1	HARBORFRONT TRACT	FEE	M
1184	1	HARBORFRONT TRACT	FEE	M
1184	3	FISHERMAN'S MEMORIAL	FEE	M
1194	1	HARBORFRONT TRACT	FEE	M
1194	10	HARBORFRONT TRACT	FEE	M
1194	11	HARBORFRONT TRACT	FEE	M
1194	12	HARBORFRONT TRACT	FEE	M
1194	2	HARBORFRONT TRACT	FEE	M
1194	3	HARBORFRONT TRACT	FEE	M
1194	4	HARBORFRONT TRACT	FEE	M
1194	5	HARBORFRONT TRACT	FEE	M
1194	6	HARBORFRONT TRACT	FEE	M
1194	7	HARBORFRONT TRACT	FEE	M
1194	8	HARBORFRONT TRACT	FEE	M
1194	9	HARBORFRONT TRACT	FEE	M
1195	1	HARBORFRONT TRACT	FEE	M
1200	NONE	OPEN SPACE MEDIAN STRIP	FEE	M
1206	1	HARBORFRONT TRACT	FEE	M
1217	1.01	HARBORFRONT TRACT	FEE	M
1221	2	BEACH FRONT	FEE	M
1300	NONE	OPEN SPACE MEDIAN STRIP	FEE	M